

Learn about Agriculture Research at UMES.



Animal Science



Plant Science



Water Quality and Nutrient Management



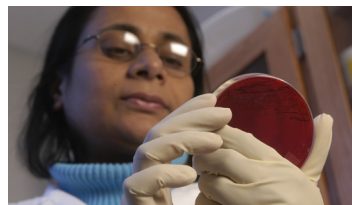
Healthy Cooking



Use of Grasses for Bio-fuels



Soybean Inoculants



Food Safety: Seafood

and Many More!! Come join us on September 12!



Sponsored by the  
National Resources  
Conservation Service

Department of Agriculture, Food and Resource Sciences  
30921 Martin Court  
University of Maryland Eastern Shore  
Princess Anne, MD 21853



# Agriculture Field Day at UMES



Come see the agricultural endeavors and research being conducted at the Agricultural Experiment Station and Maryland Cooperative Extension at UMES

*Saturday, September 12, 2009*

*at the University of Maryland Eastern Shore  
in Princess Anne, Maryland*

Sponsored by the  
National Resources  
Conservation Service



# Ag Field Day at UMES

**Come see the agricultural endeavors and research being conducted at the Agricultural Experiment Station and Maryland Cooperative Extension at UMES**

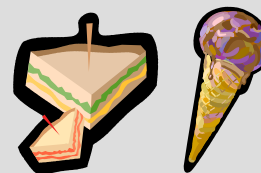
**Saturday, September 12, 2009 9:30 A.M. until 3:00 P.M.  
University of Maryland Eastern Shore**

### **Come learn about:**

- How to increase crop yield of soybeans
- How to minimize surface water pollution in no-till soils
- Best practices to minimize *E. Coli* and *Salmonella* contamination in fresh produce and leafy greens
- Methods to control sheep and goat parasites
- Grasses grown for bio-fuels
- A litter-less flooring system for broiler production
- Growing commercial orchids
- Food safety: seafood
- Healthy eating
- PPE for pesticide applicators

### LUNCH

**Lunch and an ice-cream social will be provided to participants**



*Door Prizes!*

**Other Activities:** GPS demo/game, Self-guided tour of floral trial garden

**Activities for Children:** Water testing activity, Needle in the Haystack, Milk the Cow, Straw Maze

**Demonstrations and Displays:** Research displays and demonstrations, Healthy cooking demonstrations, Community and government support agencies

### AFTERNOON INFORMATIONAL SESSION

**News you can use! Learn about USDA programs and services for small farmers and how to access these programs!**

For more information or to register, contact: Gail Sykes at (410) 651-6625;  
fax (410) 651-7656; email: gasykes@umes.edu. Online pre-registration is available at www.umes.edu/SANS

Participants will be directed to parking upon arrival on campus.

### Ag Field Day Pre-registration

NAME: \_\_\_\_\_

ADDRESS: \_\_\_\_\_

CITY \_\_\_\_\_ ST \_\_\_\_\_ ZIP \_\_\_\_\_ Email \_\_\_\_\_

\_\_\_\_\_ Number attending

#### **Mail pre-registration form to:**

Department of Agriculture, Food and Resource Sciences  
Crop Research and Aquaculture Building  
Attn: Ag Field Day 30921 Martin Court UMES  
Princess Anne, MD 21853