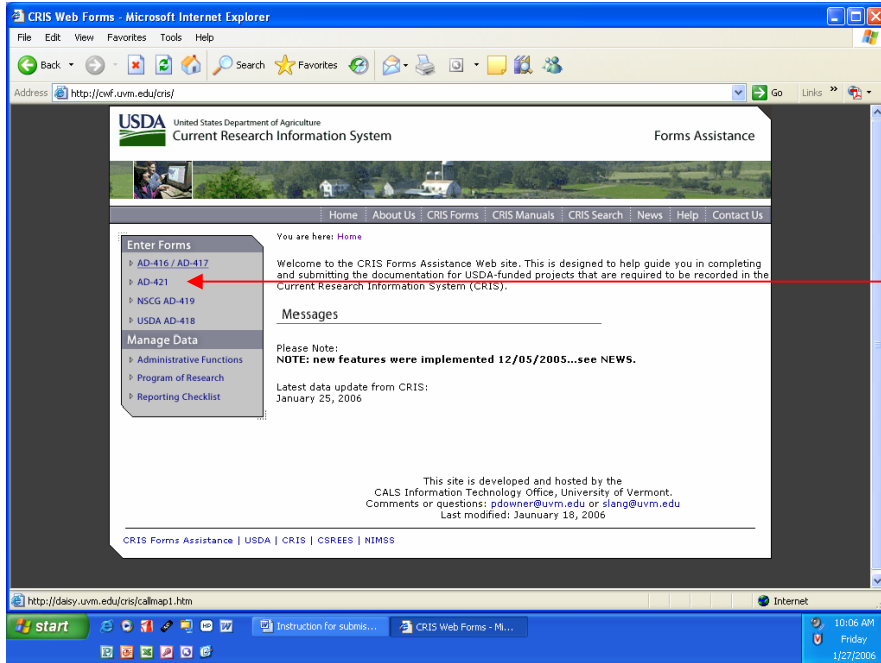


INSTRUCTIONS FOR PROGRESS/TERMINATION REPORT AD-421

1. The screens views and instructions (in the yellow boxes) provide you with stepwise directions to enter Progress /Termination report. **Please note: The same form is used for Annual Reports and Termination Reports. There is a radio button that allows you to select the type of report. See Step 6.**
2. Please use the help provided through hot links in the CRIS system for additional assistance. If you are having difficulties entering the information, please contact Dr. Anugrah Shaw (ashaw@mail.umes.edu)
3. Print a copy of the instructions.

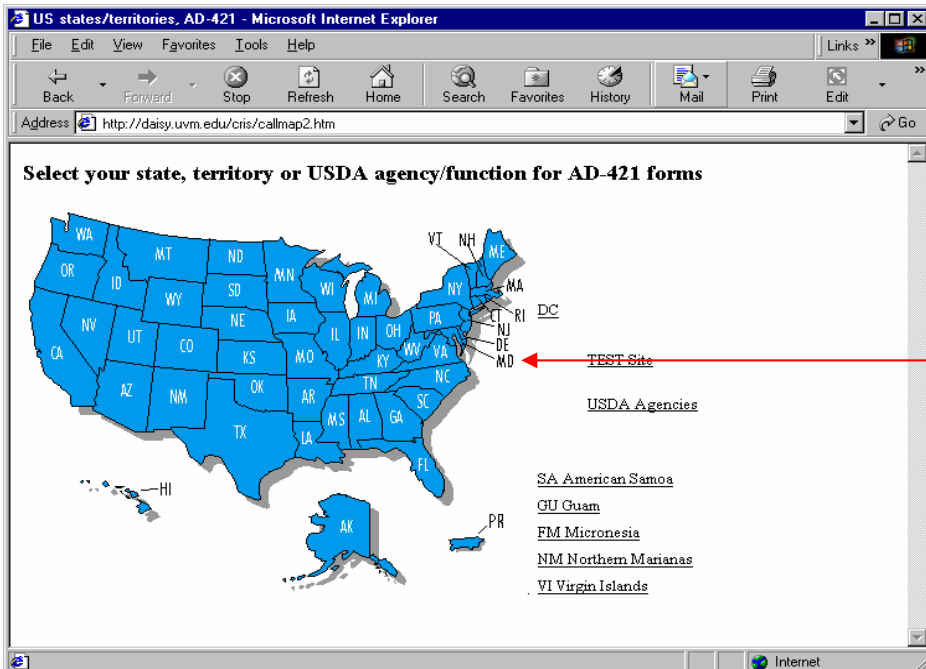
STEP 1: GO TO [HTTP://CWF.UVM.EDU/CRIS](http://cwf.uvm.edu/cris)

Click on AD-421 Progress/Termination Report to open the form



Click here to enter Progress/Termination Reports (AD-421)

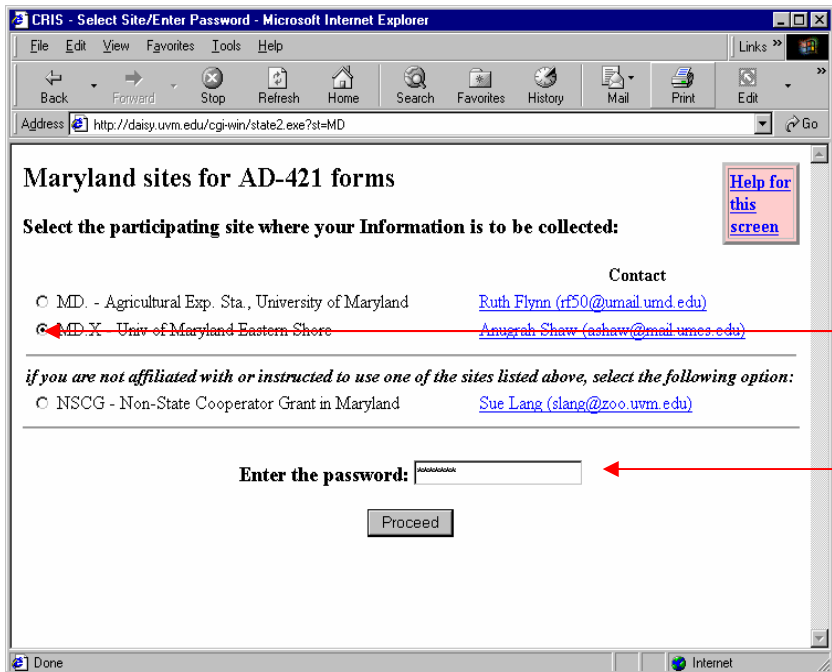
STEP 2: CLICK ON "MD" TO SELECT THE STATE



Click on "MD" to select the state

STEP 3: CLICK ON THE RADIO BUTTON TO SELECT UNIVERSITY OF MARYLAND EASTERN SHORE

Enter the password and click "Proceed". Passwords will be supplied to you separately

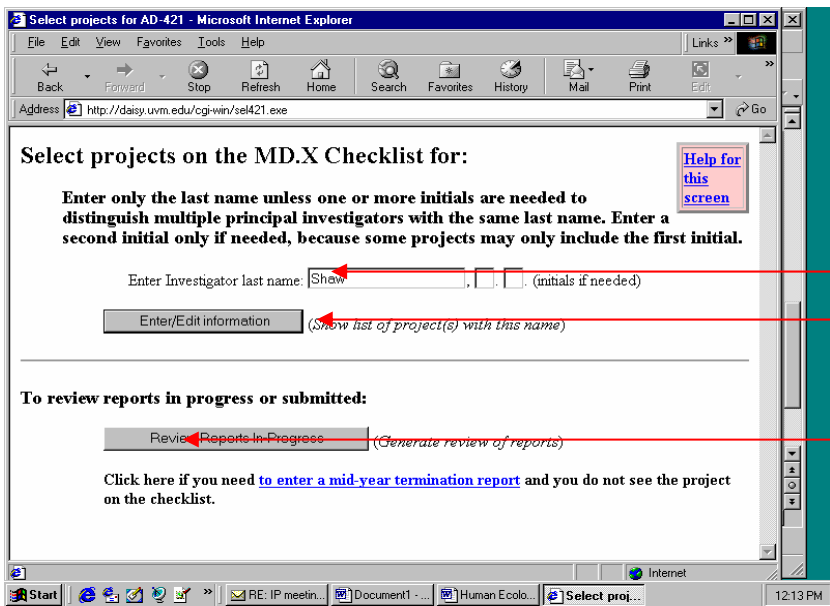


Click on the radio button to select UMES

Enter the password and click "Proceed". Password will be e-mailed to you separately.

STEP 4: ENTER THE INVESTIGATOR LAST NAME

Click "Enter/Edit" for a report that has not been submitted to CRIS and "Review Reports In-Progress" for reports submitted to CRIS



Enter the Last Name of the Investigator


Click here to enter/edit for a report that has not been submitted to CRIS

To review reports


STEP 5: SELECT THE PROJECT IF YOU HAVE MORE THAN ONE PROJECT, AND THEN CLICK THE EDIT ICON.

Project Selection

for: SHAW

Click the  next to the project to enter or edit the report

Reports for projects shown below are for the calendar year

<input type="checkbox"/>	 MDX-PPE-0103 0193204	Evans-Allen	Mediating Exposure to Environmental Hazards through Textile Systems	10/01/2002 - 09/30/2007	Shaw, A.
--------------------------	---	-------------	---	-------------------------	----------

If a project is not listed, [read this](#)

Contact Anugrah Shaw (ashaw@umes.edu) for assistance.

Legend:

- means the report has been marked complete - contact Anugrah Shaw (ashaw@umes.edu) to unmark if you need to edit.
- means information has been entered but NOT marked complete
- means there is no information in the narrative, impact, or the publications sections
- NEW** means the project is so new that a report may not be needed, [please click this link for an explanation!](#)

[Help for this screen](#)

STEP 6: COMPLETE THE INFORMATION ON THE FORM

Select the radio buttons to select either a progress report or a termination report

Use hyperlinks by clicking on the title for information about the field

[Click here to obtain help regarding the fields](#)

After entering the information, click on "Check Data" to verify the information

U.S. Department of Agriculture
AD-421 Progress Report

Termination Date (Month, Day, Year) **09/30/2000**

1. Account No. 0176387
2. Agency Identification No. CSREES s. MD X
3. Station/Project No. MDX-NUT-235
4. Project Type Evans-Allen

7. Title
EFFECT OF ENVIRONMENT AND DIET ON THE NUTRIENT COMPOSITION OF STRIPED BASS AND TILAPIA
12. Investigator Name(s) (Last, First and Initial)
Hafez, Y. S.

Enter or modify the following information. Use the underlined links for Help. Press the "Check data" button at the bottom when finished.

Select which type of report and verify the dates:

Progress Report -- 40. Period Covered (mo/da/year) 01/01/2000 TO 12/31/2000 (like 12/31/1999)

Termination Report -- 40. Period Covered

Start Date	Term Date
01/02/1998	01/31/2001

If any project information is not correct, contact Anugrah Shaw at ashaw@mail.umes.edu

41. Progress/Termination Report (Limit to 3200 characters) [MDX-FS-100]

Complete the information on this form.

Click on the radio button if this is a termination report.

Use hyperlinks by clicking on the title for information about the field.

After entering the information, click on "Check Data" button at the bottom of the screen.

- Review the feedback provided after the data has been checked.
- Make revisions if needed.
- Save data by clicking the Save Button.
- Print a hard copy of the report and submit it to the Experiment Station Director.