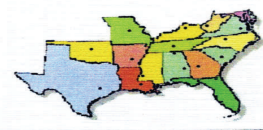




Message from the Chair



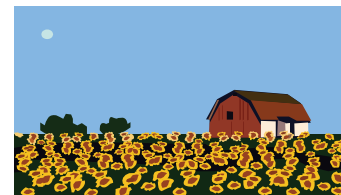
Planning is underway for our summer meeting to be held in Asheville, NC the week of August 10-14, 2009. Guided by expectations for meetings by the ARD to keep the membership informed and to expand and strengthen partnerships, we have selected this location because of one of the recent Farm Bill changes. The 1890s are eligible to receive McIntire—Stennis funds. Thus we are planning some of our summer meeting programming with Dr. Jim Reaves, who is the Station Director of the U.S. Forest Service Southern Research Station. Please visit <http://www.srs.fs.usda.gov/> to learn more about this FS Research Station, which is proud of the cutting edge

science being conducted by its 130 scientists. The mission of the station is “to create the science and technology needed to sustain and enhance southern forest ecosystems and the benefits they provide.” Touring research sites conducted by the station scientists and being exposed to research programs that may pertain to work being done or being proposed at 1890 campuses should be extremely beneficial to the members of the ARD as partnerships and collaborations are considered. The 2009 summer meeting venue will be The Grove Park Inn Resort and Spa. So, while we will have full days of site visits, deliberations, learning, planning and networking, our evenings will be conducive to further camaraderie and fellowship in a beautiful

setting. We will hear from our USDA and 1862 partners, and from committees such as our Creative Thinking Committee, Strategic Planning Committee and Constitution and Bylaws Committee. The Executive Committee and I think you will find this a very productive and informative summer meeting, and we look forward to seeing you all there.

Sincerely,

Orlando F. McMeans, Chair



Streamlining the Plan of Work (POW)

The 2008 Farm Bill contains a provision that requires that CSREES, along with its university partners, devise measures to streamline reporting submissions. The benefits of streamlining the current system would include: a) reducing the reporting burden on land-grant universities; b) the prevention of double reporting, i.e. CRIS reports and the AREERA Plan of Work request the same information; c) more efficient and timely POW reviews by CSREES NPL State Liaisons; d) more efficient and accurate linkages to the USDA Strategic Goals and Objectives by linking Knowledge Areas; e) providing flexibility for state planning and reporting within a structured framework; f) providing supporting documents for CSREES Portfolio Reviews, CSREES Budget, and the Program Assessment Rating Tool (PART) for the Office of Management and Budget (OMB); and g) a structured database format to make it easier to identify performance measures and track progress.

Over the past year a One Solution Coordinating Committee has been working on streamlining the POW and the Annual Report of Accomplishments and Results. One of the next steps is that a panel from each of the five regions will send two individuals to review or identify measures to streamline the submission and pay particular attention to citing specific data elements for inclusion. Every five years a panel of experts will reconvene to further assess the relevance, quality, and usefulness of the performance data received from the “One Solution” submissions and make recommendations for improvement. The ARD and the AEA will both send a representative. The representative can be a director, campus accountability specialist, person who is responsible for writing POW documents, or a business officer. We will seek ARD input for the appropriate representative at the summer meeting.

ARD UPDATES



The President's 2010 Budget is Out

The chart below summarizes 1890 funding and other CSREES appropriations:

Funding Lines	FY 2007 Enacted in millions	FY 2008 Enacted in millions	FY 2009 Final in mil- lions	Change from FY07 to FY09 in millions	President's Budget for 2010 in millions
Evans-Allen	40.680	41.051	45.504	+4.824	45.504
1890 Extension	35.205	35.850	40.150	+4.945	40.150
Capacity Building Grants	12.375	13.592	15.000	+2.625	18.000
1890 Facilities Grants	16.777	17.267	18.000	+1.223	18.000
AFRI (formerly NRI)	190.229	190.883	201.504	+11.275	201.504
McIntire-Stennis	30.008	24.791	27.535	-2.473	27.535
EFNEP	63.538	65.557	66.155	+2.617	66.155
Improve Rural- Quality of Life *		0	0		28.000*
Challenge Grants *		5.385	5.654	0.269	23.154*
2ndary ed./2- yr.post; K-12 *			0.983		18.483*

As is indicated above, the President has not chosen to cut any of the 1890 funding lines. He has, however, included in his budget an increase of \$3 million for the Capacity Building Grants Program, which is helpful since the Extension eligibility is now in place. However, it should be noted that the three programs in the bottom of the chart (marked with *) are either new or slated for substantial increases and they relate to rural quality of life and Human Capital Development. These three are priority areas for the 1890 community and could be new streams of funding for the 1890s rather than concentrating solely on traditional 1890 funding lines.